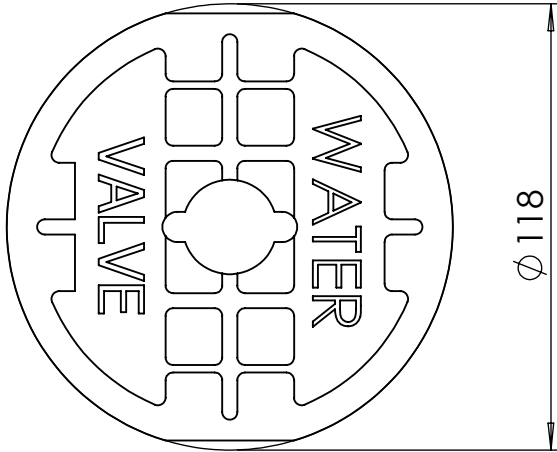
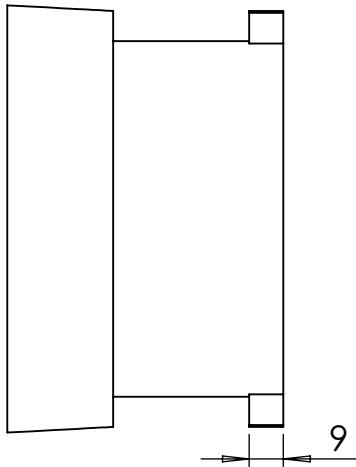


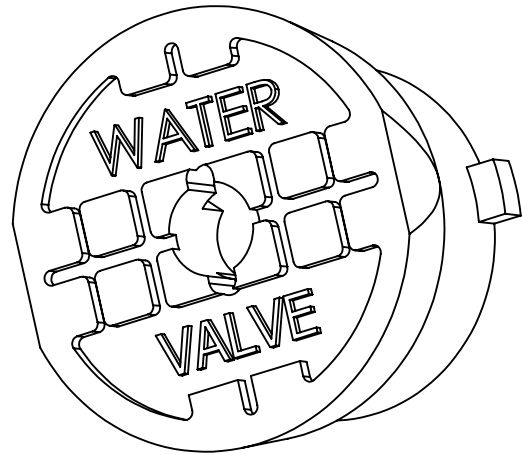
NINE FOUNDRY
RBG TRADING



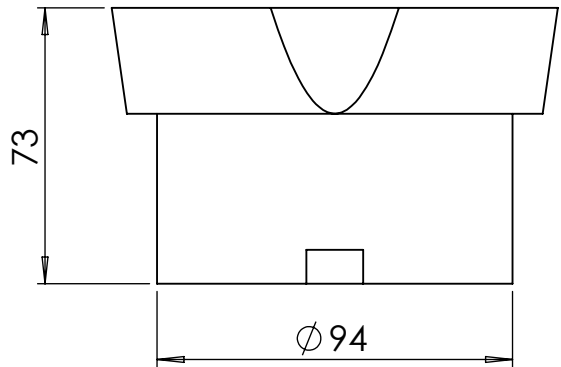
TOP VIEW



SIDE VIEW



ISO VIEW



FRONT VIEW

Notes:
Manufactured as per AS3996, rated to Class D loading.
Material Grade : Ductile Iron AS 1831/400-15

This drawing, including information shown therein is confidential it is loaned to a supplier for exclusive use by the supplier
Reproduction, exhibition, or use for any other purpose, or by any other person is not authorised.
In the interests of development we reserve the right to modify design, equipment and accessories. Dimensional, weight and performance data is to be understood as within appropriate tol

UNLESS OTHERWISE SPECIFIED: DIMENSIONS ARE IN MILLIMETERS SURFACE FINISH: TOLERANCES: LINEAR: ANGULAR:				FINISH: AS CAST PAINTED BLACK				DO NOT SCALE DRAWING				REVISION: 0															
<div>TITLE:</div> <div>CI SLUICE VALVE LID ONLY *TO SUIT PLASTIC COVERS</div>																											
																NAME		SIGNATURE		DATE							
																DRAWN		TSG				12/7/21					
																CHK'D											
																APP'V'D											
																MFG											
Q.A								MATERIAL: DUCTILE IRON				DWG NO. BIRD13				A3											
								WEIGHT:				SCALE:1:2				SHEET 1 OF 1											